



DIAMOND HOPE

# TRUCK PARTS

QUALITY • SERVICE • VALUE

2024 Accessories catalogue

DH  
DIAMOND HOPE



# CONTENTS



---

**01** | AXLE COVER  
03-04

---

---

**02** | ABS  
NUT COVER  
05-09

---

---

**03** | STEEL  
NUT COVER  
10

---

---

**04** | SIMULATOR  
11-12

---

---

**05** | CENTER CAP  
13

---

---

**06** | HUB CAP  
14

---

---

**07** | QUARTER  
FENDER  
15

---

---

**08** | MUD  
FLAP HANGER  
16-18

---

---

**09** | MUD  
FLAP WEIGHT  
19

---

---

**10** | TRUCK  
EXHAUST PIPE  
20-21

---

---

**11** | HORN  
22

---

---

**12** | OTHER PARTS  
23-24

---



# ABOUT US

## **Nanjing Diamond Hope Machinery Trading Co.,Ltd.**

We Diamond Hope, which originated from Nanjing, Jiangsu Province, have been manufacturing and exporting truck parts since 2009, and received a good reputation in this industry.

We specialize in truck axle cover, ABS nut cover, steel nut cover, wheel simulator, hub cap, truck exhaust pipe, mud flap hanger and so on. During the past years, we committed to develop new and high quality product to meet customers's requirements. Wide range of product line make our customer could do one stop purchase to save cost and control the risk.

We have a professional technical department, and we are skilled in customized design, that enabled us to help our customer develop unique designs to meet new market demands, and win the market.

We focus on the competitiveness of the brand, pay attention to the growth trend of the industry, and enhance the core competitiveness of the brand in the industry. We are in accordance with the business philosophy such as 'customer comes first' with our global customers for a win-win development. In our efforts of expanding our international market share, we sincerely look forward to building a long term business relationship with customers at home and abroad for a brighter future.





# AXLE COVER

## PART: DH-11220P



OUTSIDE DIAMETER	350MM
CENTER HOLE DIAMETER	220MM
TOTAL HEIGHT	80MM
MATERIAL	ABS

## PART: DH-11221P



OUTSIDE DIAMETER	350MM
CENTER HOLE DIAMETER	220MM
TOTAL HEIGHT	215MM
MATERIAL	ABS

## PART: DH-11220



OUTSIDE DIAMETER	350MM
CENTER HOLE DIAMETER	220MM
TOTAL HEIGHT	80MM
MATERIAL	ABS

## PART: DH-11221



OUTSIDE DIAMETER	350MM
CENTER HOLE DIAMETER	220MM
TOTAL HEIGHT	215MM
MATERIAL	ABS

## PART: DH-11220F



OUTSIDE DIAMETER	350MM
CENTER HOLE DIAMETER	220MM
TOTAL HEIGHT	90MM
MATERIAL	ABS

## PART: DH-11221F



OUTSIDE DIAMETER	352MM
CENTER HOLE DIAMETER	220MM
TOTAL HEIGHT	215MM
MATERIAL	ABS

## PART: DH-11976



OUTSIDE DIAMETER	285MM
CENTER HOLE DIAMETER	220MM
TOTAL HEIGHT	68MM
MATERIAL	ABS

## PART: DH-11975



OUTSIDE DIAMETER	285MM
CENTER HOLE DIAMETER	220MM
TOTAL HEIGHT	200MM
MATERIAL	ABS

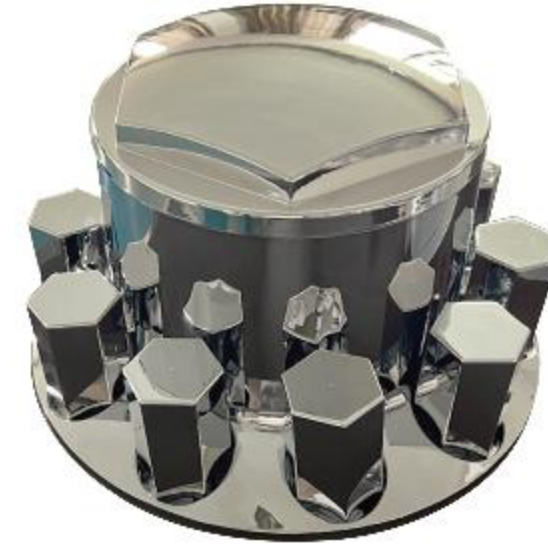


## PART: DH-4 F



OUTSIDE DIAMETER	350MM
CENTER HOLE DIAMETER	220MM
TOTAL HEIGHT	90MM
MATERIAL	ABS

## PART: DH-4 R



OUTSIDE DIAMETER	350MM
CENTER HOLE DIAMETER	220MM
TOTAL HEIGHT	215MM
MATERIAL	ABS

## PART: DH-3 F



OUTSIDE DIAMETER	350MM
CENTER HOLE DIAMETER	220MM
TOTAL HEIGHT	175MM
MATERIAL	ABS

## PART: DH-3 R



OUTSIDE DIAMETER	350MM
CENTER HOLE DIAMETER	220MM
TOTAL HEIGHT	305MM
MATERIAL	ABS

## PART: DH-2 F



OUTSIDE DIAMETER	350MM
CENTER HOLE DIAMETER	220MM
TOTAL HEIGHT	102MM
MATERIAL	ABS

## PART: DH-2 R



OUTSIDE DIAMETER	350MM
CENTER HOLE DIAMETER	220MM
TOTAL HEIGHT	246MM
MATERIAL	ABS

## PART: DH-11285



OUTSIDE DIAMETER	350MM
CENTER HOLE DIAMETER	220MM
TOTAL HEIGHT	100MM
MATERIAL	ABS

## PART: DH-11286

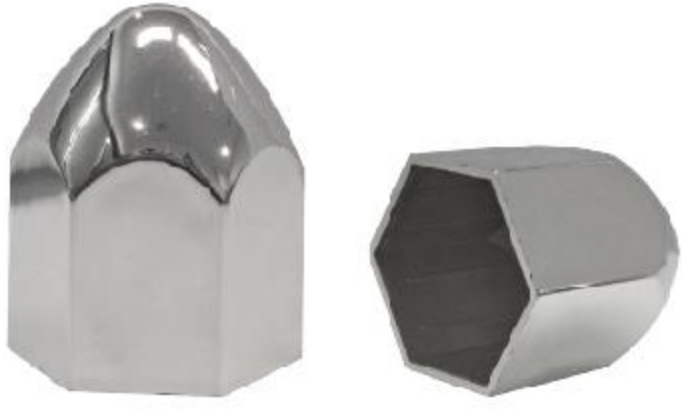


OUTSIDE DIAMETER	350MM
CENTER HOLE DIAMETER	220MM
TOTAL HEIGHT	226MM
MATERIAL	ABS



# ABS NUT COVER

## PART:DH-110P



HEIGHT	59MM
INSIDE HEX	33MM
TYPE	PUSH-ON
MATERIAL	ABS

## PART: DH-47215



HEIGHT	82MM
INSIDE HEX	33MM
TYPE	TWIST-ON
MATERIAL	ABS

## PART: DH-C-71-2



HEIGHT	72MM
INSIDE HEX	33MM
TYPE	PUSH-ON
MATERIAL	ABS

## PART: DH-1902



HEIGHT	67MM
INSIDE HEX	33MM
TYPE	TWIST-ON
MATERIAL	ABS

## PART: DH-1903



HEIGHT	62MM
INSIDE HEX	33MM
TYPE	TWIST-ON
MATERIAL	ABS

## PART: DH-2105



HEIGHT	106MM
INSIDE HEX	33MM
TYPE	TWIST-ON
MATERIAL	ABS

## PART: DH-2106



HEIGHT	96MM
INSIDE HEX	33MM
TYPE	TWIST-ON
MATERIAL	ABS

## PART: DH-2117



HEIGHT	112MM
INSIDE HEX	33MM
TYPE	TWIST-ON
MATERIAL	ABS

## PART: DH-2205



HEIGHT	70MM
INSIDE HEX	33MM
TYPE	TWIST-ON
MATERIAL	ABS

## PART: DH-2210



HEIGHT	85MM
INSIDE HEX	33MM
TYPE	TWIST-ON
MATERIAL	ABS



## PART: DH-2305



HEIGHT	123MM
INSIDE HEX	33MM
TYPE	TWIST-ON
MATERIAL	ABS

## PART: DH-11140



HEIGHT	108MM
INSIDE HEX	33MM
TYPE	TWIST-ON
MATERIAL	ABS

## PART: DH-11141 TWIST ON



HEIGHT	123MM
INSIDE HEX	33MM
TYPE	TWIST-ON
MATERIAL	ABS

## PART: DH-11141 PUSH ON



HEIGHT	123MM
INSIDE HEX	33MM
TYPE	PUSH-ON
MATERIAL	ABS

## PART: DH-11142(33MM)



HEIGHT	106MM
INSIDE HEX	33MM
TYPE	PUSH-ON
MATERIAL	ABS

## PART: DH-11142(38MM)



HEIGHT	106MM
INSIDE HEX	38MM
TYPE	PUSH-ON
MATERIAL	ABS

## PART: DH-11143



HEIGHT	105MM
INSIDE HEX	33MM
TYPE	PUSH-ON
MATERIAL	ABS

## PART: DH-11144



HEIGHT	106MM
INSIDE HEX	38MM
TYPE	PUSH-ON
MATERIAL	ABS

## PART: DH-11145



HEIGHT	110MM
INSIDE HEX	33MM
TYPE	TWIST-ON
MATERIAL	ABS

## PART: DH-11147



HEIGHT	90MM
INSIDE HEX	33MM
TYPE	PUSH-ON
MATERIAL	ABS



# ABS NUT COVER

## PART: DH-11148



HEIGHT	80MM
INSIDE HEX	33MM
TYPE	PUSH-ON
MATERIAL	ABS

## PART: DH-11150



HEIGHT	88MM
INSIDE HEX	33MM
TYPE	PUSH-ON
MATERIAL	ABS

## PART: DH-11151



HEIGHT	80MM
INSIDE HEX	33MM
TYPE	PUSH-ON
MATERIAL	ABS

## PART: DH-11159



HEIGHT	68MM
INSIDE HEX	33MM
TYPE	PUSH-ON
MATERIAL	ABS

## PART: DH-11160



HEIGHT	85MM
INSIDE HEX	33MM
TYPE	TWIST-ON
MATERIAL	ABS

## PART: DH-11161



HEIGHT	86MM
INSIDE HEX	33MM
TYPE	PUSH-ON
MATERIAL	ABS

## PART: DH-11162 TWIST ON



HEIGHT	90MM
INSIDE HEX	33MM
TYPE	TWIST-ON
MATERIAL	ABS

## PART: DH-11162 PUSH ON



HEIGHT	90MM
INSIDE HEX	33MM
TYPE	PUSH-ON
MATERIAL	ABS

## PART: DH-11163



HEIGHT	55MM
INSIDE HEX	33MM
TYPE	PUSH-ON
MATERIAL	ABS

## PART: DH-11168



HEIGHT	105MM
INSIDE HEX	33MM
TYPE	PUSH-ON
MATERIAL	ABS



## PART: DH-11169



HEIGHT	96MM
INSIDE HEX	33MM
TYPE	TWIST-ON
MATERIAL	ABS

## PART: DH-11171



HEIGHT	72MM
INSIDE HEX	33MM
TYPE	PUSH-ON
MATERIAL	ABS

## PART: DH-11172



HEIGHT	62MM
INSIDE HEX	33MM
TYPE	PUSH-ON
MATERIAL	ABS

## PART: DH-11173



HEIGHT	71MM
INSIDE HEX	38MM
TYPE	PUSH-ON
MATERIAL	ABS

## PART: DH-11175



HEIGHT	72MM
INSIDE HEX	33MM
TYPE	TWIST-ON
MATERIAL	ABS

## PART: DH-11176



HEIGHT	106MM
INSIDE HEX	25MM
TYPE	PUSH-ON
MATERIAL	ABS

## PART: DH-11177



HEIGHT	108MM
INSIDE HEX	33MM
TYPE	TWIST-ON
MATERIAL	ABS

## PART: DH-11178



HEIGHT	116MM
INSIDE HEX	33MM
TYPE	TWIST-ON
MATERIAL	ABS

## PART: DH-11181



HEIGHT	108MM
INSIDE HEX	33MM
TYPE	TWIST-ON
MATERIAL	ABS

## PART: DH-11904



HEIGHT	100MM
INSIDE HEX	33MM
TYPE	TWIST-ON
MATERIAL	ABS



# ABS NUT COVER

## PART: 18010



HEIGHT	72MM
INSIDE HEX	33MM
TYPE	PUSH-ON
MATERIAL	ABS

## PART: DH-18011



HEIGHT	70MM
INSIDE HEX	33MM
TYPE	PUSH-ON
MATERIAL	ABS



## PART: DH-10003



HEIGHT	57MM
INSIDE HEX	38MM
HEMLINE	STRAIGHT
MATERIAL	CHROME/SS

## PART: DH-CW1100-46/51



HEIGHT	46/51MM
INSIDE HEX	32/33MM
HEMLINE	FLANGE 50
MATERIAL	CHROME/SS

## PART: DH-8077



HEIGHT	64MM
INSIDE HEX	32/33MM
HEMLINE	FLANGE 50
MATERIAL	CHROME/SS

## PART: DH-10700



HEIGHT	51MM
INSIDE HEX	32/33MM
HEMLINE	FLANGE 50
MATERIAL	CHROME/SS

## PART: DH-10048-33/41



HEIGHT	61MM
INSIDE HEX	33/41MM
HEMLINE	FLANGE 50
MATERIAL	CHROME/SS

## PART: DH-CW1101-33



HEIGHT	51MM
INSIDE HEX	32/33MM
HEMLINE	FLANGE 50
MATERIAL	CHROME/SS

## PART: DH-ATEN001



HEIGHT	45MM
INSIDE HEX	32MM
HEMLINE	FLANGE 50
MATERIAL	CHROME/SS

## PART: DH-10005



HEIGHT	55MM
INSIDE HEX	32/33MM
HEMLINE	FLANGE 50
MATERIAL	CHROME/SS

## PART: DH-CW1100-55/61



HEIGHT	55/61MM
INSIDE HEX	32/33MM
HEMLINE	FLANGE 50
MATERIAL	CHROME/SS

## PART: DH-1109BKR/B/Y/G



HEIGHT	46MM
INSIDE HEX	38MM
HEMLINE	STRAIGHT
MATERIAL	CHROME/SS



## PART: 72201F/R



SIZE	22.5"
LUGNUT	10
HANDHOLE	5/2
PCD	Φ285.75

FOR FORD GM CHEVY

## PART: 72208F/R



SIZE	22.5"Universal
LUGNUT	10
HANDHOLE	10
PCD	Φ285.75/335

FOR ALL TRUCK&BUS

## PART: 62019F/R



SIZE	19.5"Universal
LUGNUT	8
HANDHOLE	8
PCD	Φ225/275

FOR DAF FORD GM ISUZU

## PART: 71902F/R



SIZE	19.5"
LUGNUT	8
HANDHOLE	5
PCD	Φ224.99

FOR 19.5\*6/6.5 FORD F450/F550

## PART: 71903F/R



SIZE	19.5"
LUGNUT	10
HANDHOLE	5
PCD	Φ224.99

FOR 19.5\*6/6.5 FORD RAPTOR ,F450/F550

## PART: 62017F/R



SIZE	17.5"Universal
LUGNUT	6
HANDHOLE	6
PCD	Φ222.25

FOR EUROCARGO ISUZU

## PART: 71605F/R



SIZE	16"Universal
LUGNUT	8
HANDHOLE	8
PCD	Φ165.1/170/180

FOR FORD GM CHEVY

## PART: 71607F/R



SIZE	16"
LUGNUT	8
HANDHOLE	4
PCD	Φ170

FOR FORD GM CHEVY DMC



## PART: 71606F/R



SIZE	16"
LUGNUT	8
HANDHOLE	8
PCD	Φ165.1

FOR FORD GM CHEVY

## PART: DH-D2014F



PCD	10X285.75MM
HEIGHT	110MM
MATERIAL	SS/CHROME

## PART: DH-D2012F



PCD	10X285.75MM
HEIGHT	110MM
MATERIAL	SS/CHROME

## PART: DH-D2012R



PCD	10X285.75MM
HEIGHT	260MM
MATERIAL	SS/CHROME

## PART: DH-D2016F



PCD	10X285.75MM
HEIGHT	110MM
MATERIAL	SS/CHROME

## PART: DH-D2016R



PCD	10X285.75MM
HEIGHT	250MM
MATERIAL	SS/CHROME

## PART: DH-D2018F



PCD	10X285.75MM
HEIGHT	120MM
MATERIAL	SS/CHROME

## PART: DH-D2018R



PCD	10X285.75MM
HEIGHT	280MM
MATERIAL	SS/CHROME



# CENTER CAP

## PART: DH-67



HEIGHT 86.7MM  
OUTSIDE DIAMETER 67.3MM  
MATERIAL SS/CHROME/BLACK

## PART: DH-71



HEIGHT 82.5MM  
OUTSIDE DIAMETER 70.5MM  
MATERIAL SS/CHROME/BLACK

## PART: DH-75H



HEIGHT 77MM  
OUTSIDE DIAMETER 74.5MM  
MATERIAL SS/CHROME/BLACK

## PART: DH-81



HEIGHT 93MM  
OUTSIDE DIAMETER 80.5MM  
MATERIAL SS/CHROME/BLACK

## PART: DH-95



HEIGHT 108MM  
OUTSIDE DIAMETER 94.5MM  
MATERIAL SS/CHROME/BLACK

## PART: DH-112



HEIGHT 100MM  
OUTSIDE DIAMETER 111.7MM  
MATERIAL SS/CHROME/BLACK

## PART: DH-113



HEIGHT 73MM  
OUTSIDE DIAMETER 113MM  
MATERIAL SS/CHROME/BLACK

## PART: DH-124



HEIGHT 112MM  
OUTSIDE DIAMETER 124MM  
MATERIAL SS/CHROME/BLACK

## PART: DH-130



HEIGHT 94.8MM  
OUTSIDE DIAMETER 129.8MM  
MATERIAL SS/CHROME/BLACK

## PART: DH-130H



HEIGHT 125.5MM  
OUTSIDE DIAMETER 129.5MM  
MATERIAL SS/CHROME/BLACK



## PART: DH-4BK/4BKSS



OUTSIDE DIAMETER	Ø226
SIDE WALL	Ø219
HEIGHT	53.34
MATERIAL	SS/CHROME

## PART: DH-16900/16901



OUTSIDE DIAMETER	Ø200
SIDE WALL	Ø186-0.20
HEIGHT	66
MATERIAL	SS/CHROME

## PART: DH-4NP



OUTSIDE DIAMETER	Ø226
SIDE WALL	Ø219
HEIGHT	69.5
MATERIAL	SS/CHROME

## PART: DH-1102-6U



OUTSIDE DIAMETER	Ø226
SIDE WALL	Ø219
HEIGHT	55.4
MATERIAL	SS/CHROME

## PART: DH-20119



OUTSIDE DIAMETER	Ø226
SIDE WALL	Ø219
HEIGHT	72.5
MATERIAL	SS/CHROME

## PART: DH-1102-6US



OUTSIDE DIAMETER	Ø226
SIDE WALL	Ø219
HEIGHT	88
MATERIAL	SS/CHROME

## PART: DH-CN10502CM



OUTSIDE DIAMETER	Ø228
SIDE WALL	Ø220
HEIGHT	66
MATERIAL	SS/CHROME

## PART: DH-A-9M



OUTSIDE DIAMETER	Ø213
SIDE WALL	Ø203+0/-0.2
HEIGHT	90
MATERIAL	SS/CHROME



## STAINLESS STEEL QUARTER FENDER

### PART: DH-4001SS



SIZE 24"X24"/27"  
MOUNT TUBE BRACKET  
MATERIAL 430SS

### PART: DH-5001SS



SIZE 24"X24"/27"/29"  
MOUNT TRIANGULAR RODS  
MATERIAL 430SS

### PART: DH-6001SS



SIZE 24"X24"/27"  
MOUNT TUBE BRACKET/U-CLAMPS  
MATERIAL 430SS

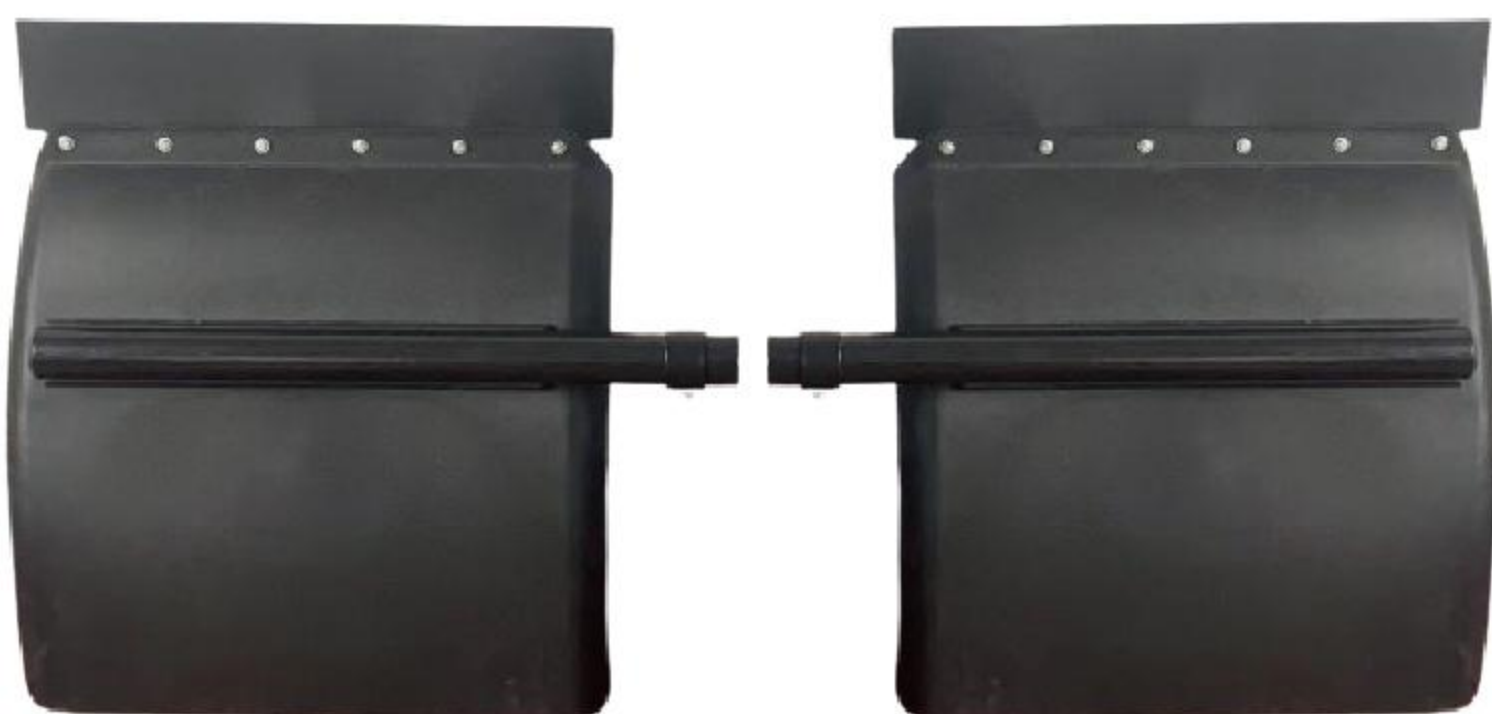
### PART: DH-4001SST



SIZE 24"X24"/27"  
MOUNT TUBE BRACKET  
MATERIAL 430SS

## BLACK POLY PLASTIC QUARTER FENDER

### PART: DH-2023PL







DIAMOND HOPE

# MUD FLAP HANGER

## PART: DH-646



LENGTH	30"
STYLE	STRAIGHT
BOLT PATTERN"	2-1/2"&2"&1 -1/8"
MATERIAL	CHROME/SS/BLACK

## PART: DH-646-RE



LENGTH	30"
STYLE	STRAIGHT
BOLT PATTERN"	2-1/2"&2"&1 -1/8"
MATERIAL	CHROME/SS/BLACK

## PART: DH-649



LENGTH	30"
STYLE	STRAIGHT
BOLT PATTERN"	1-1/8"
MATERIAL	CHROME/SS/BLACK

## PART: DH-650



LENGTH	30"
STYLE	45° ANGLED
BOLT PATTERN"	1-1/8"&2"&2.5"
MATERIAL	CHROME/SS/BLACK



## PART: DH-648



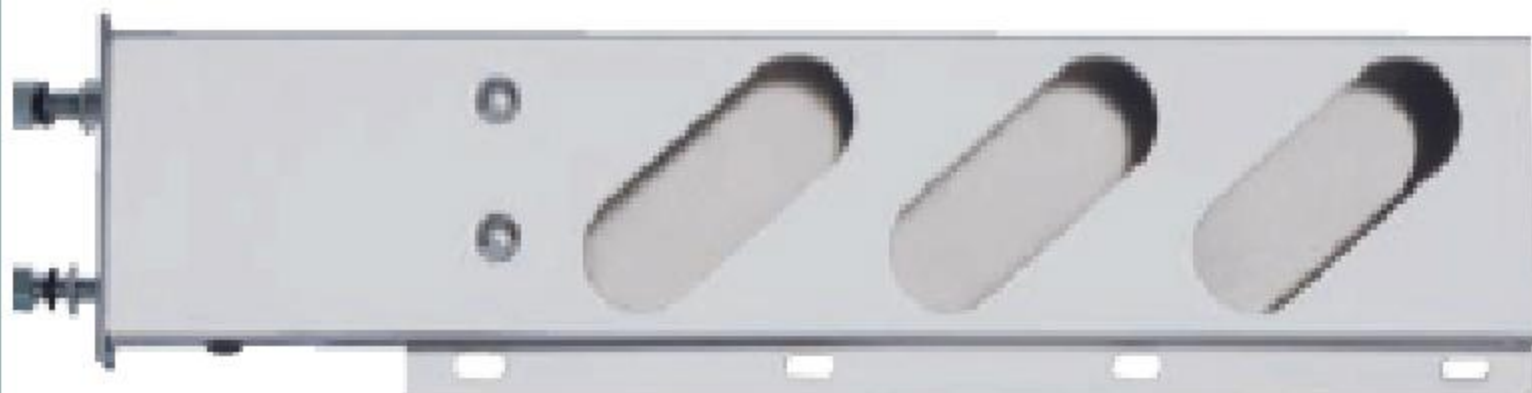
LENGTH	28"
STYLE	45° ANGLED
BOLT PATTERN"	1 -1/8"
MATERIAL	CHROME/SS/BLACK

## PART: SPRING LOADED LIGHT BAR



MODEL	DH-2001SS
LIGHT CUTOUTS	4" ROUND
BOLT PATTERN"	2 1/2"
MATERIAL	430SS

## PART: SPRING LOADED LIGHT BAR



MODEL	DH-2002SS
LIGHT CUTOUTS	OVAL
BOLT PATTERN"	2 1/2"
MATERIAL	430SS

## PART: ANTI SAIL BRACKETS



SIZE	24"x18"/21"
METERIAL	CHROME/SS
MODEL	DH-NN1106/NN1102/NN10447



## PART: ECONOMY-STYLE MUD FLAP HANGER



MODEL	SIZE	STYLE
DH-10627	30"	TRIPLE COIL,STRAIGHT
DH-10626	30"	DOUBLE COIL,STRAIGHT
DH-10625	30"	ONE COIL,STRAIGHT
DH-10671	30"	STRAIGHT

## PART: ECONOMY-STYLE MUD FLAP HANGER



MODEL	SIZE	STYLE
DH-10616	30"	TRIPLE COIL,45° ANGLE
DH-10615	30"	DOUBLE COIL,45° ANGLE
DH-10614	30"	ONE COIL,45° ANGLE
DH-10613	30"	45° ANGLE



# MUD FLAP WEIGHT

## PART: DH-MD1104



SIZE 2"x24"



MATERIAL CHROME/SS

STYLE MUD FLAP TOP WEIGHT

## PART: DH-MD1105



SIZE 4"x24"



MATERIAL CHROME/SS

STYLE MUD FLAP BOTTOM WEIGHT

## PART: DH-MD1113



SIZE 3"x18"



MATERIAL CHROME/SS

STYLE MUD FLAP WEIGHT

## PART: DH-MD1215



SIZE 3"x14"



MATERIAL CHROME/SS

STYLE MUD FLAP BOTTOM WEIGHT



### REDUCED CURVED



MODEL	SIZE	LENGTH
65-CO36	6" to 5"	36"
65-CO48	6" to 5"	48"
65-CO60	6" to 5"	60"
75-CO48	7" to 5"	48"
75-CO60	7" to 5"	60"



MODEL	SIZE	LENGTH	STYLE
5-B36T/48T/60T	5"	36"/48"/60"	BULHORN
6-B54T/B60T	6"	54"/60"	BULHORN
7-B54T/B60T	7"	54"/60"	BULHORN
8-B54T/B60T	8"	54"/60"	BULHORN
10-B54T/B60T	10"	54"/60"	BULHORN

### MIDDLE SPOOL



MODEL	SIZE	LENGTH
5-52S/55S	5"	52"/55"
6-52S/55S	6"	52"/55"
7-52S/55S	7"	52"/55"
8-52S/55S	8"	52"/55"
10-52S/55S	10"	52"/55"



MODEL	SIZE	LENGTH	STYLE
5-C36T/48T/60T	5"	36"/48"/60"	CURVED
6-C54T/C60T	6"	54"/60"	CURVED
7-C54T/C60T	7"	54"/60"	CURVED
8-C54T/C60T	8"	54"/60"	CURVED
10-C54T/C60T	10"	54"/60"	CURVED

### FLAT TOP





MODEL	SIZE	LENGTH
5-F36T/48T/60T	5"	36"/48"/60"
6-F54T/F60T	6"	54"/60"
7-F54T/F60T	7"	54"/60"
8-F54T/F60T	8"	54"/60"
10-F54T/F60T	10"	54"/60"




MODEL	SIZE	LENGTH	STYLE
5-M36T/48T/60T	5"	36"/48"/60"	MITERED
6-M54T/M60T	6"	54"/60"	MITERED
7-M54T/M60T	7"	54"/60"	MITERED
8-M54T/M60T	8"	54"/60"	MITERED
10-M54T/M60T	10"	54"/60"	MITERED



MODEL	DESCRIPTION
	TEL-65 DIAMETER 6 "TO 5 ", 90 DEGRESS, ELBOW
	TEL-75 DIAMETER 7 "TO 5 ", 90 DEGRESS, ELBOW
	TEL-85 DIAMETER 8 "TO 5 ", 90 DEGRESS, ELBOW
	TEL-105 DIAMETER 10 "TO 5 ", 90 DEGRESS, ELBOW
	TEL-8 8 "DIAMETER, 90 DEGRESS, ELBOW
	TEL-10 10 "DIAMETER, 90 DEGRESS, ELBOW

MODEL	DESCRIPTION
	TCLA-51 5 "DIAMETER, STAINLESS STEEL
	TCLA-61 6 "DIAMETER, STAINLESS STEEL
	TCLA-101 10 "DIAMETER, STAINLESS STEEL

MODEL	DESCRIPTION
	TCLA-PEB STAINLESS STEEL BRACKET

MODEL	DESCRIPTION
	TCLA-63 POLYURETHANE LINING



## PART: DHT-307-1



Triad tone air horn(train horn)  
or for truck.  
Color:Chrome  
Voltage:12V/24V  
Current:3.5A/2.0A  
Air pressure:0.4~0.8MPa  
Sound level(2M):125±5dB

## PART: DHT-310



Four tone air horn(train horn)  
or for truck.  
Color:Chrome  
Voltage:12V/24V  
Current:3.5A/2.0A  
Air pressure:0.4~0.8MPa  
Sound level(2M):125±5dB

## PART: DHT-319



Triad tone air horn(train horn)  
or for truck.  
Sound:Triad  
Color:black or Chrome  
Voltage:12V/24V  
Current:3.5A/7.0A  
Air pressure:0.4~0.8MPa  
Sound level(2M):125±5dB

## PART: DHY-101



Double tone air horn(train horn)  
or for truck.  
Color:Chrome  
Voltage:12V/24V  
Current:3.5A/2.0A  
Air pressure:0.4~0.8MPa  
Sound level(2M):125±5dB

## PART: DHR-612



Ooogah horn(Dog horn).  
Color:red  
Voltage:12V  
Current:1.4A  
Air pressure:≥0.12MPa  
Sound level(2M):115±5dB

## PART: DHR-605-1



Music:DIXIE LAND,LA CUCA  
RACHA,SUSANA,RIVER KWAI  
Five pipe music air horn.  
Color:red  
Voltage:12V  
Current:30A  
Air pressure:≥0.12MPa  
Sound level(2M):115±5dB

## PART: DHY-606-2



Music:THE GOD FATHER,  
ALMA LLANERA  
Six pipe music air horn.  
Color:red  
Voltage:12V  
Current:26A  
Air pressure:≥0.12MPa  
Sound level(2M):115±5dB

## PART: DH-904-1



Buzzer alarm(drum horn)of  
moying backward  
Sound: 1 sound or 6 sounds  
Color:BLACK  
Voltage:12V-24V  
Current:0.3-1.2A  
Power:20W-30W  
Frequence:400~8000Hz  
Sound level(1.2M):105±5dB



## PART:HEAVY DUTY LUG NUT COVER PULLER

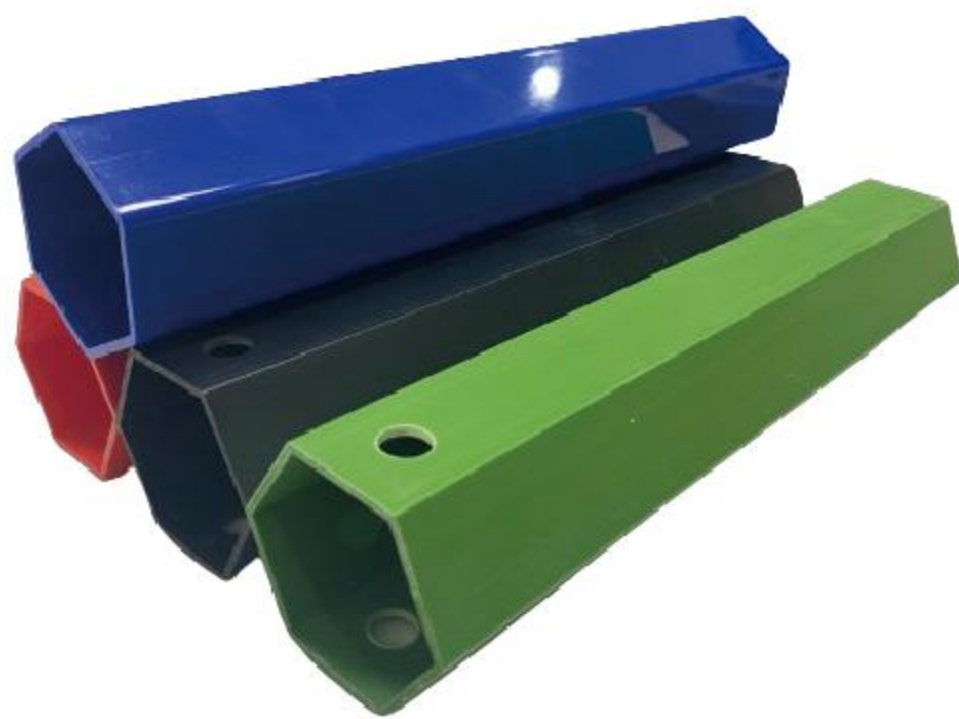


Help removing lug nut covers easily without struggle.

Designed for 1-1/2" and 33mm across flat lug nut covers.

Heavy-Duty chrome plated aluminum lug nut cover puller with red vinyl coated grips.

## PART:DH-11108



33mm Plastic Lug Nut Cover Socket tool - 11" long.

Makes for easy removal/install of plastic screw on lug nut covers  
Protects plastic lug nut covers when screwing on.

Not for use with metal or push on lug nut covers.

## PART:DH-210152/210153



Pogo Stick for Cable and Hose Support 40", Zinc Plated



Pogo Stick for Cable and Hose Support 40", chrome plated

## PART:210301



Pogo Stick for Cable and Hose Support 40", stainless 304

## PART:7" TRUCK FAN





## PART:RV LEVELING BLOCKS



## PART:CAR RAMP&LIFTING RAMP



## PART:ALUMINUM ALLOY TOOLBOX





# **Nanjing Diamond Hope Machinery Trading Co.,Ltd**

**Address:Room 616,Hall 2,Cloud Metropolis, No.12 Shishi Road,**

**Qixia District, Nanjing City, Jiangsu Province, China.**

**Post code: 210049**

**TEL: 0086-25-84725893/84726932**

**MOB:0086-13605155829/19951960532**

**Email:xyp6598@vip.163.com/sales09@zwwheels.com**

**[www.dhtruckparts.com](http://www.dhtruckparts.com)**

